

Proposed Organizational Structure

Klamath River Basin Conservation Implementation Program



Introduction

The Klamath River Basin Conservation Implementation Program (CIP) is a collaborative, multi-party effort dedicated to coordinating conservation and restoration efforts throughout the Klamath River Basin and providing technical and funding resources to achieve Klamath River Basin management and ecosystem restoration goals.

The requirement to develop the CIP is a reasonable and prudent alternative of the May 2002 Biological Opinion written by NOAA. The concept of the CIP has also been endorsed by the Governors of Oregon and California; the Secretaries of the Interior, Agriculture, and Commerce; and the Administrator of the Environmental Protection Agency. Between May 2003 and February 2006, the CIP evolved through feedback from public meetings and numerous stakeholder contacts. The third draft of the CIP Program Document includes proposed goals and an organizational structure based upon this feedback.

The ECO Resource Group has evaluated the proposed options for the organizational structure and decision-making processes to initially guide implementation of the CIP. In addition, an extensive review of existing materials related to the CIP and the Klamath River Basin, an evaluation of a number of other large ecosystem restoration projects, and conversations with a variety of stakeholders were conducted. These contributed to refinement of the proposed organizational structure that will be the topic of a Working Session on December 6–7, 2006, in Medford, Oregon. Klamath River Basin stakeholders are invited to attend the Working Session to discuss the organizational structure and decision-making processes being proposed.

The proposed organizational structure and roles, as refined, in addition to the CIP goals and success factors, are presented on the following pages. This proposed organizational structure is intended as a mechanism by which stakeholders can work together to move forward collaboratively and develop long-term solutions for the Klamath River Basin. The structure being proposed is an initial framework. Changes to the structure will occur over time as the CIP is implemented in order to keep the program adaptive and responsive to the needs of the communities and the river.

This proposed organizational structure is illustrated inside and described on the back page.

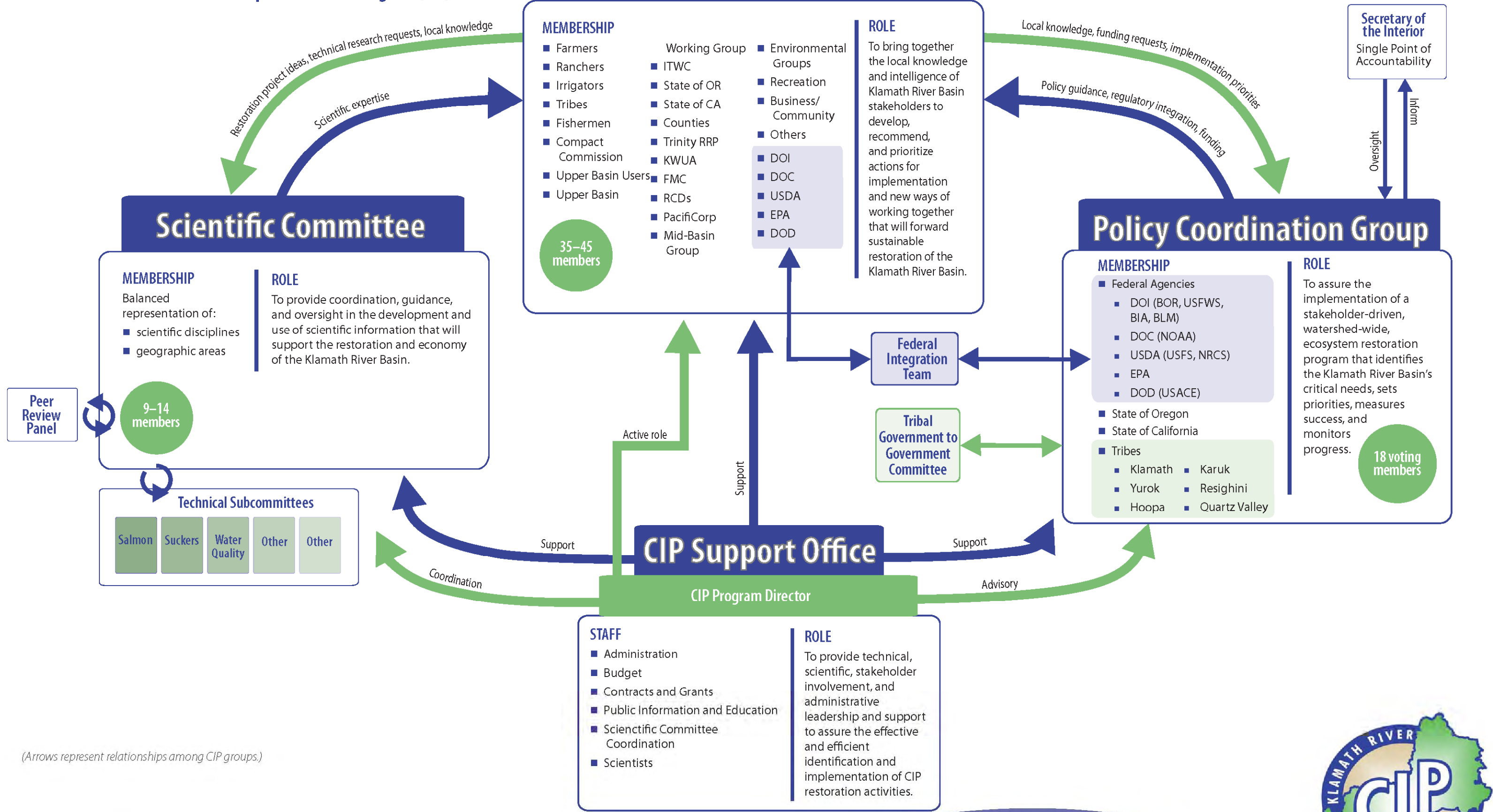
Klamath River Basin CIP SUCCESS FACTORS

Using extensive background research and experience with similar ecosystem management projects, the following success factors for implementation of the CIP have been identified:

- Effectiveness
- Transparency
- Coordination
- Legitimacy
- Accountability
- Representativeness
- Continuity

These **success factors** will increase the chances of successful decision making for CIP implementation and for the Klamath River Basin as a whole.

Proposed Organizational Structure and Roles Klamath River Basin Conservation Implementation Program (CIP)



(Arrows represent relationships among CIP groups.)



Klamath River Basin CIP GOALS

- To restore the Klamath River ecosystem.
- To further the fulfillment of the federal government's tribal trust responsibilities as they relate to natural resources from the Klamath River ecosystem.
- To sustain agricultural, municipal, and industrial water use while reducing demand throughout the Klamath River Basin.
- To foster a lasting partnership between governments (tribal, federal, state, county, and local) and private interests of the Klamath River Basin to advance the goals of the CIP.

Description of Proposed Structure

The proposed organizational structure for the CIP includes four main components. It is designed to integrate solid scientific information with local participation in decision making and federal and state agency requirements.

At the heart of the structure is the **CIP Management Council**, representative of all stakeholders and interests in the basin. The Management Council brings together the local knowledge and intelligence of Klamath River Basin stakeholders to develop, recommend, and prioritize actions that will forward sustainable restoration of the Klamath River Basin. They ask, "What can and do we need to do?"

The **Scientific Committee** provides coordination, guidance, and technical oversight in the development and use of scientific information to support the restoration and economy of the Klamath River Basin. The Scientific Committee asks, "What do we know, or need to know?"

The **Policy Coordination Group** provides guidance and coordination regarding federal, state, and tribal responsibilities, and funding opportunities to meet the basin's critical needs. The Policy Coordination Group also sets and matches priorities with resources, measures success, and monitors progress. They ask, "How can we make this work?"

The **CIP Support Office** provides expert support to the CIP Management Council, Scientific Committee, and Policy Coordination Group to implement the Klamath River Basin CIP. The Support Office provides technical, scientific, stakeholder involvement, and administrative leadership and support to assure the effective and efficient identification and implementation of CIP restoration activities. The CIP Support Office asks, "What support is needed for the CIP to be successful?"

Questions about the organizational structure can be directed to the ECO Resource Group at (206) 855-0590.

Additional information about the CIP is available online at: <http://www.usbr.gov/mp/kbao/CIP/index.html> or by calling the Bureau of Reclamation's Klamath Basin Area Office at (541) 883-6935.